

1 lane road in places
may be logging trucks

• 52 mi •
miles between dots

- paved highway
- paved secondary road
- gravel road
- dirt road
- Pacific Crest Trail

NORTHERN END
Sacramento Valley
Hiking Conference maps

to Hwy 3
Parks Creek trailhead (on top of pass)

Pacific Crest Trail
Parks Creek trailhead



Darlingtonia californica
California Pitcher Plant
frequent in boggy seeps
here to Castle Crag

Mount Eddy is highest
point in CA/OR/WA
west of Interstate 5

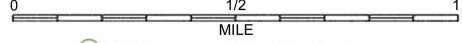


Pacific Crest Trail • Castle Crag to Parks Creek
Map 5 of 5 (Mount Eddy)

see US Geological Survey publication **TOPOGRAPHIC MAP SYMBOLS**

- Pacific Crest Trail
- other trail
- 35 miles from southern trailhead
- suggested campsite

Water source data are from Sept 2008, driest month of a drought year.
Small water sources have Sept 2008 flow listed in gallons per minute (g/m).



Pacific Crest Trail • Castle Crag to Parks Creek
Map 4 of 5 (White Ridge)

see US Geological Survey publication TOPOGRAPHIC MAP SYMBOLS

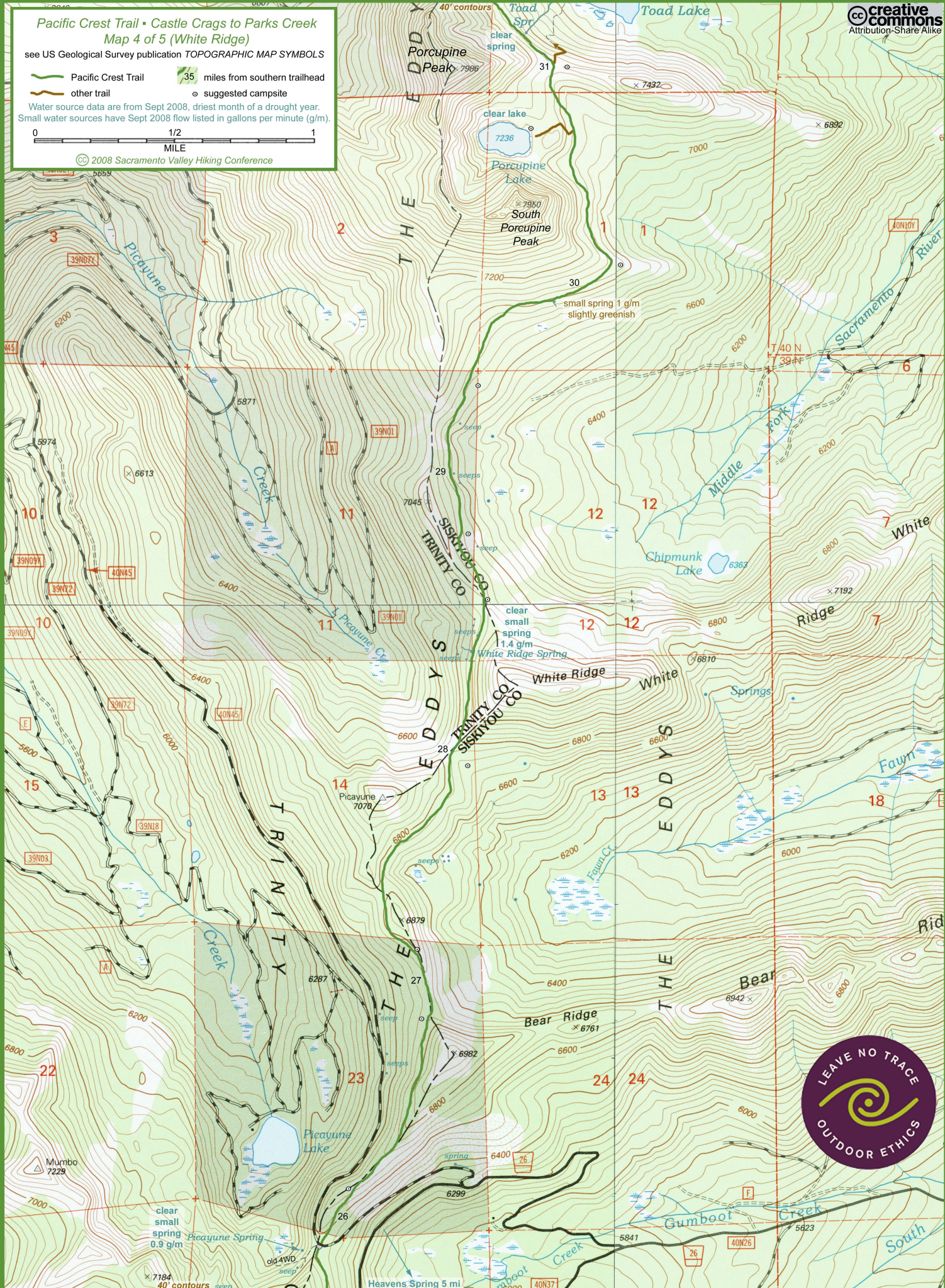
- Pacific Crest Trail
- other trail
- 35 miles from southern trailhead
- suggested campsite

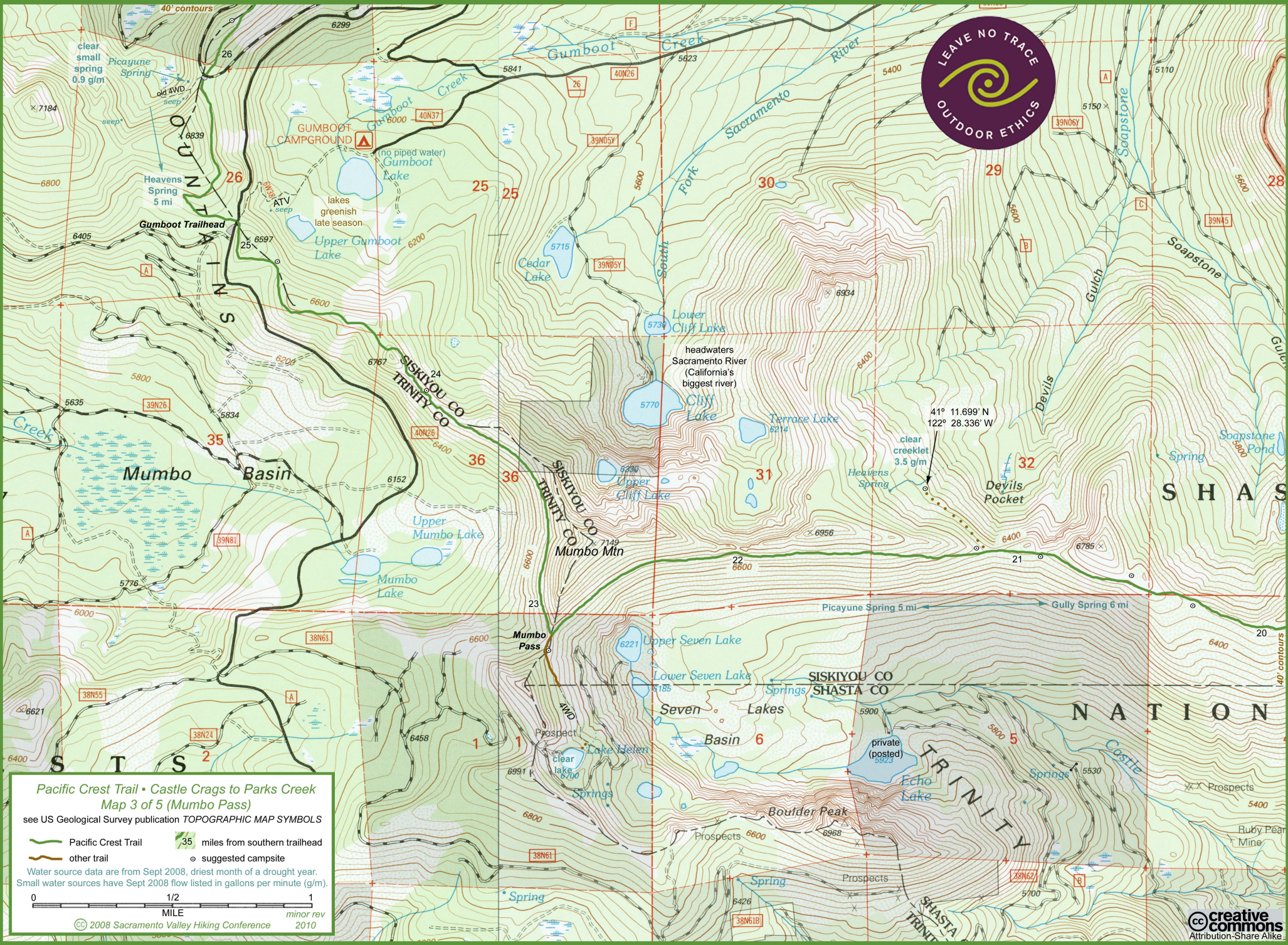
Water source data are from Sept 2008, driest month of a drought year.
Small water sources have Sept 2008 flow listed in gallons per minute (g/m).



© 2008 Sacramento Valley Hiking Conference

CC creative commons
Attribution-Share Alike





Pacific Crest Trail • Castle Crags to Parks Creek
Map 3 of 5 (Mumbo Pass)

see US Geological Survey publication TOPOGRAPHIC MAP SYMBOLS

- Pacific Crest Trail
- other trail
- 35 miles from southern trailhead
- suggested campsite

Water source data are from Sept 2008, driest month of a drought year.
Small water sources have Sept 2008 flow listed in gallons per minute (g/m).

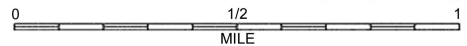
0 1/2 1
MILE
© 2008 Sacramento Valley Hiking Conference
minor rev 2010

Pacific Crest Trail • Castle Crags to Parks Creek
Map 2 of 5 (North Fork Castle Creek)

see US Geological Survey publication TOPOGRAPHIC MAP SYMBOLS

- Pacific Crest Trail
- other trail
- 35 miles from southern trailhead
- suggested campsite

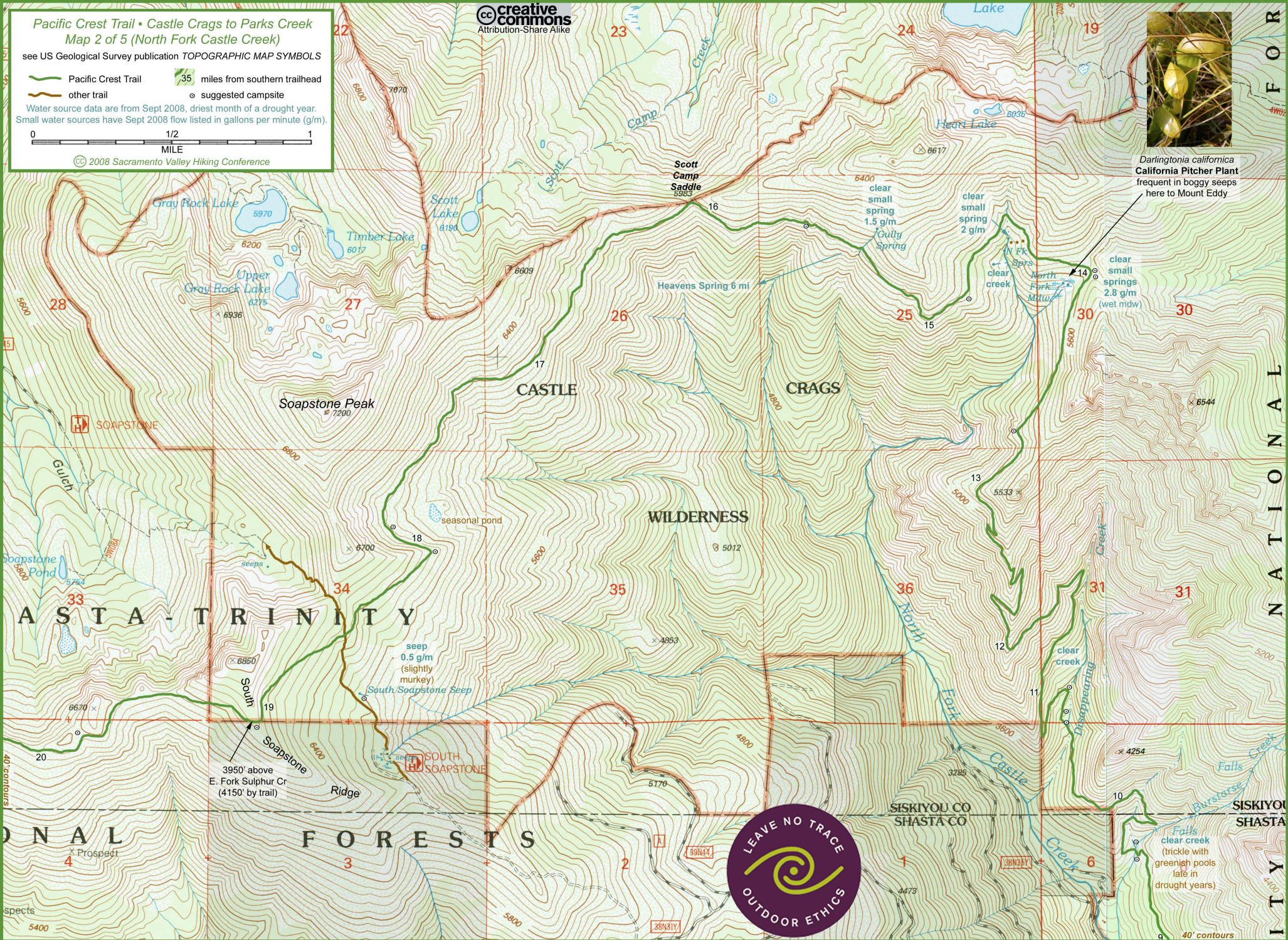
Water source data are from Sept 2008, driest month of a drought year. Small water sources have Sept 2008 flow listed in gallons per minute (g/m).



© 2008 Sacramento Valley Hiking Conference



Darlingtonia californica
California Pitcher Plant
frequent in boggy seeps
here to Mount Eddy





Pacific Crest Trail • Castle Craggs to Parks Creek
Map 1 of 5 (Castle Craggs)

see US Geological Survey publication TOPOGRAPHIC MAP SYMBOLS

Pacific Crest Trail
 other trail

35 miles from southern trailhead
 suggested campsite

Water source data are from Sept 2008, driest month of a drought year.
Small water sources have Sept 2008 flow listed in gallons per minute (g/m).

0 1/2 1
MILE
© 2008 Sacramento Valley Hiking Conference minor rev 2010



Pacific Crest Trail Castle Crags trailhead

Castle Crags (granite domes)

Note: the PCT is paved
Soda Creek Road across
the Sacramento River



gravel parking (no sign)

to Canada

Castle Crags
State Park
(no dogs)

Exit 726
Soda Cr Rd

Vista Trailhead
No parking 8PM-6AM

Castle Crags
State Park
Entrance Station

Post Office
Castella, CA 96017

Ammarati's
Market
and gas station

Exit 724

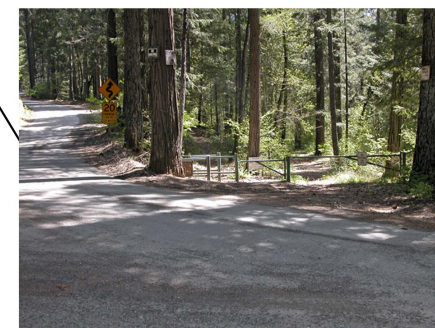
Castle Crags
State Park
(no dogs)

to Mexico

- paved highway
- paved secondary road
- gravel road
- dirt road
- Pacific Crest Trail

to Redding

1 mile



PCT trailhead at junction of
Soda Creek Road and Riverside Road
(no parking)