

to Mt Shasta

© 2008 Sacramento Valley Hiking Conference



grocery store

McCloud

Broadway

gas station



to Burney Falls

## Pacific Crest Trail McCloud River trailhead

- paved highway
- paved secondary road
- gravel road
- dirt road
- Pacific Crest Trail

52 mi  
miles between dots

6.0 mi

Squaw Valley Road

Creek

39N21

3.0 mi

3.2 mi



McCloud  
Boat Launch

Lake  
McCloud

5.3 mi

dam

Ash Camp  
campground

0.3 mi

to Canada

trailhead  
(pit toilet and large gravel parking area. No sign)

Squaw

McCloud

River

to Mexico



McCloud River trailhead  
(Centipede Gulch)



Pacific Crest Trail • Burney Falls to McCloud River  
Map 7 of 7 (Deer Creek)

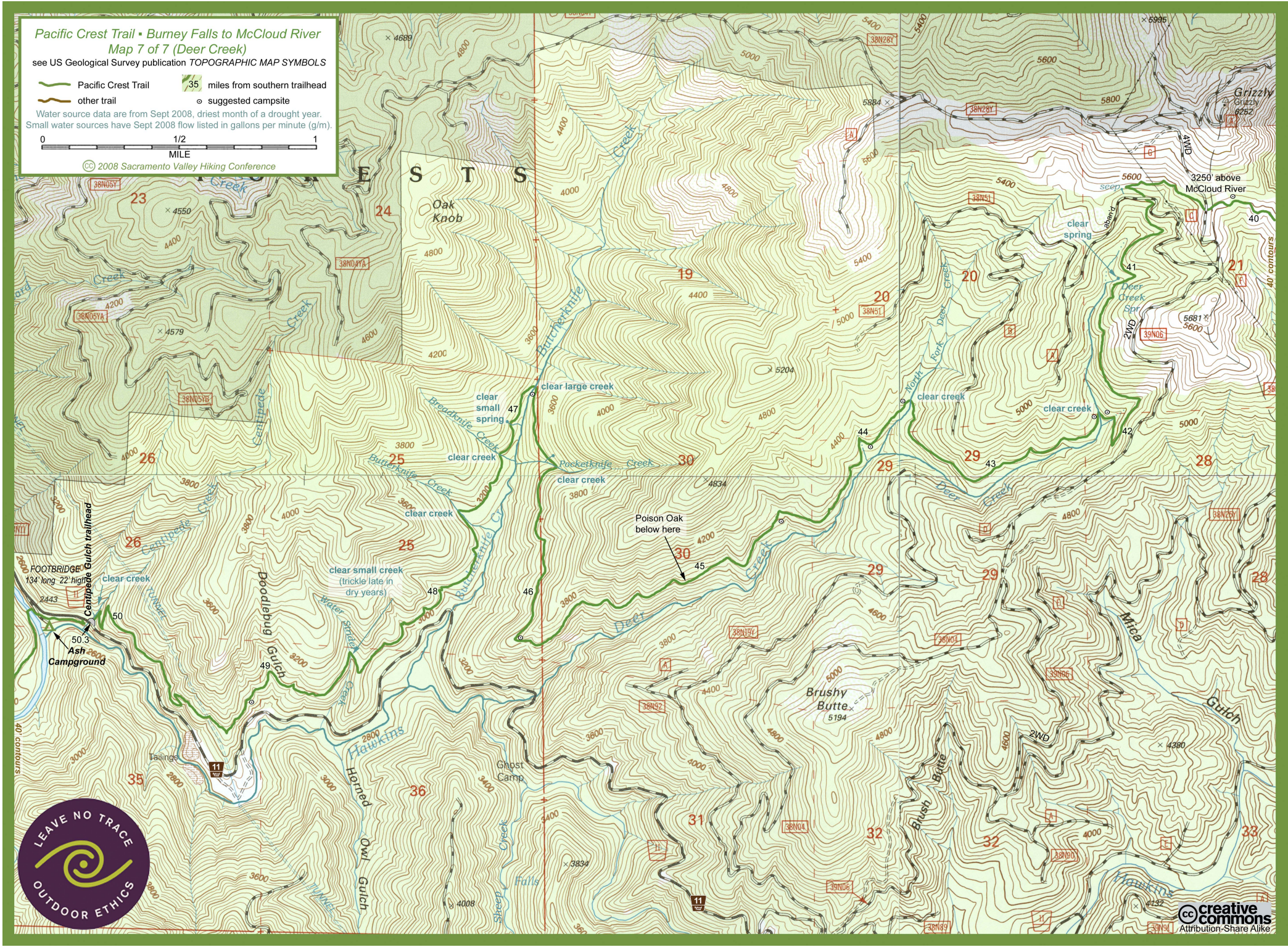
see US Geological Survey publication TOPOGRAPHIC MAP SYMBOLS

- Pacific Crest Trail
- 35 miles from southern trailhead
- other trail
- suggested campsite

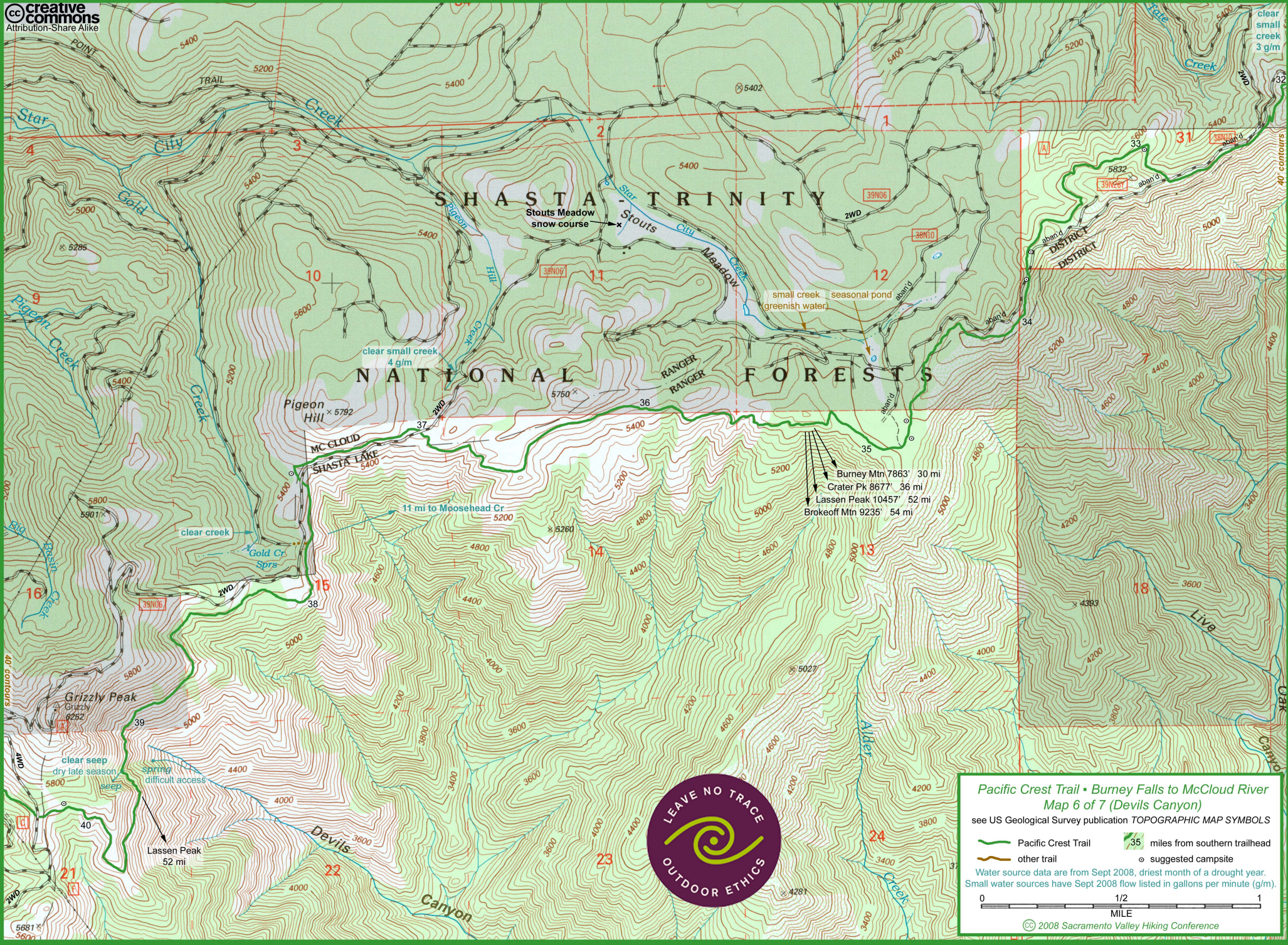
Water source data are from Sept 2008, driest month of a drought year.  
Small water sources have Sept 2008 flow listed in gallons per minute (g/m).



© 2008 Sacramento Valley Hiking Conference







**Pacific Crest Trail • Burney Falls to McCloud River**  
**Map 6 of 7 (Devils Canyon)**  
see US Geological Survey publication **TOPOGRAPHIC MAP SYMBOLS**

Pacific Crest Trail 35 miles from southern trailhead  
 other trail suggested campsite

Water source data are from Sept 2008, driest month of a drought year.  
Small water sources have Sept 2008 flow listed in gallons per minute (g/m).

0 1/2 1  
MILE

© 2008 Sacramento Valley Hiking Conference



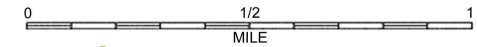


# Pacific Crest Trail • Burney Falls to McCloud River Map 5 of 7 (Moosehead Springs)

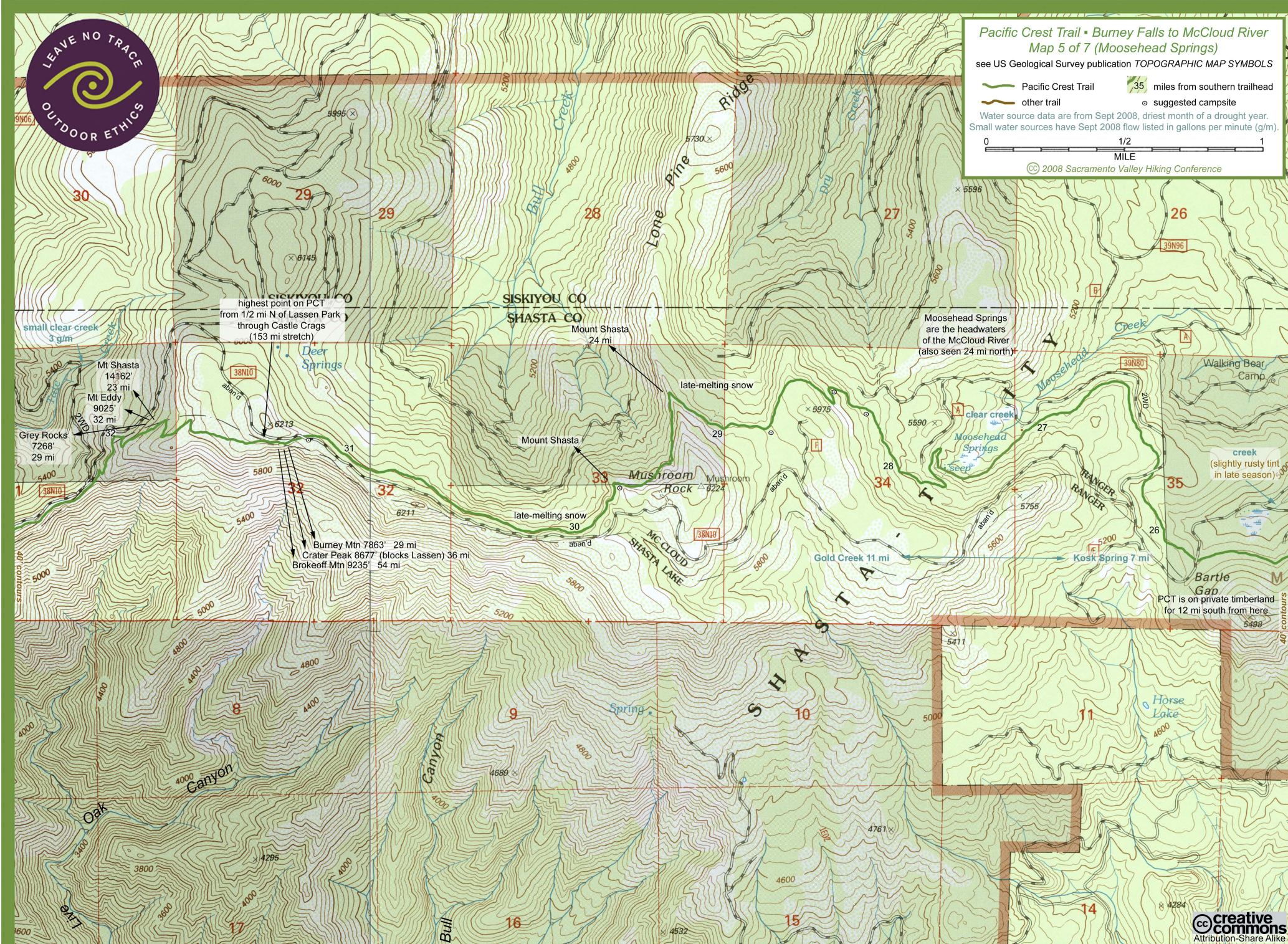
see US Geological Survey publication **TOPOGRAPHIC MAP SYMBOLS**

- Pacific Crest Trail
- other trail
- 35 miles from southern trailhead
- suggested campsite

Water source data are from Sept 2008, driest month of a drought year.  
Small water sources have Sept 2008 flow listed in gallons per minute (g/m).



© 2008 Sacramento Valley Hiking Conference



small clear creek  
3 g/m

Mt Shasta  
14162'  
23 mi

Mt Eddy  
9025'  
32 mi

Grey Rocks  
7268'  
29 mi

Deer Springs

highest point on PCT  
from 1/2 mi N of Lassen Park  
through Castle Crags  
(153 mi stretch)

late-melting snow

late-melting snow

Burney Mtn 7863' 29 mi

Crater Peak 8677' (blocks Lassen) 36 mi

Brokeoff Mtn 9235' 54 mi

Shasta Lake

Shasta

Shasta

Shasta

Shasta

Shasta

Shasta

Shasta

Shasta

Shasta

Shasta

Shasta

Shasta

Moosehead Springs  
are the headwaters  
of the McCloud River  
(also seen 24 mi north)

clear creek  
Moosehead Springs  
seep

Gold Creek 11 mi

Kosk Spring 7 mi

Bartle Gap

PCT is on private timberland  
for 12 mi south from here

Shasta

Shasta

Shasta

Shasta

Shasta

Shasta

Shasta

Shasta

Shasta

Shasta

Shasta

Shasta

Shasta

Shasta

Shasta

Shasta

Shasta

Shasta

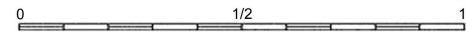


# Pacific Crest Trail • Burney Falls to McCloud River Map 4 of 7 (Kosk Creek Slides)

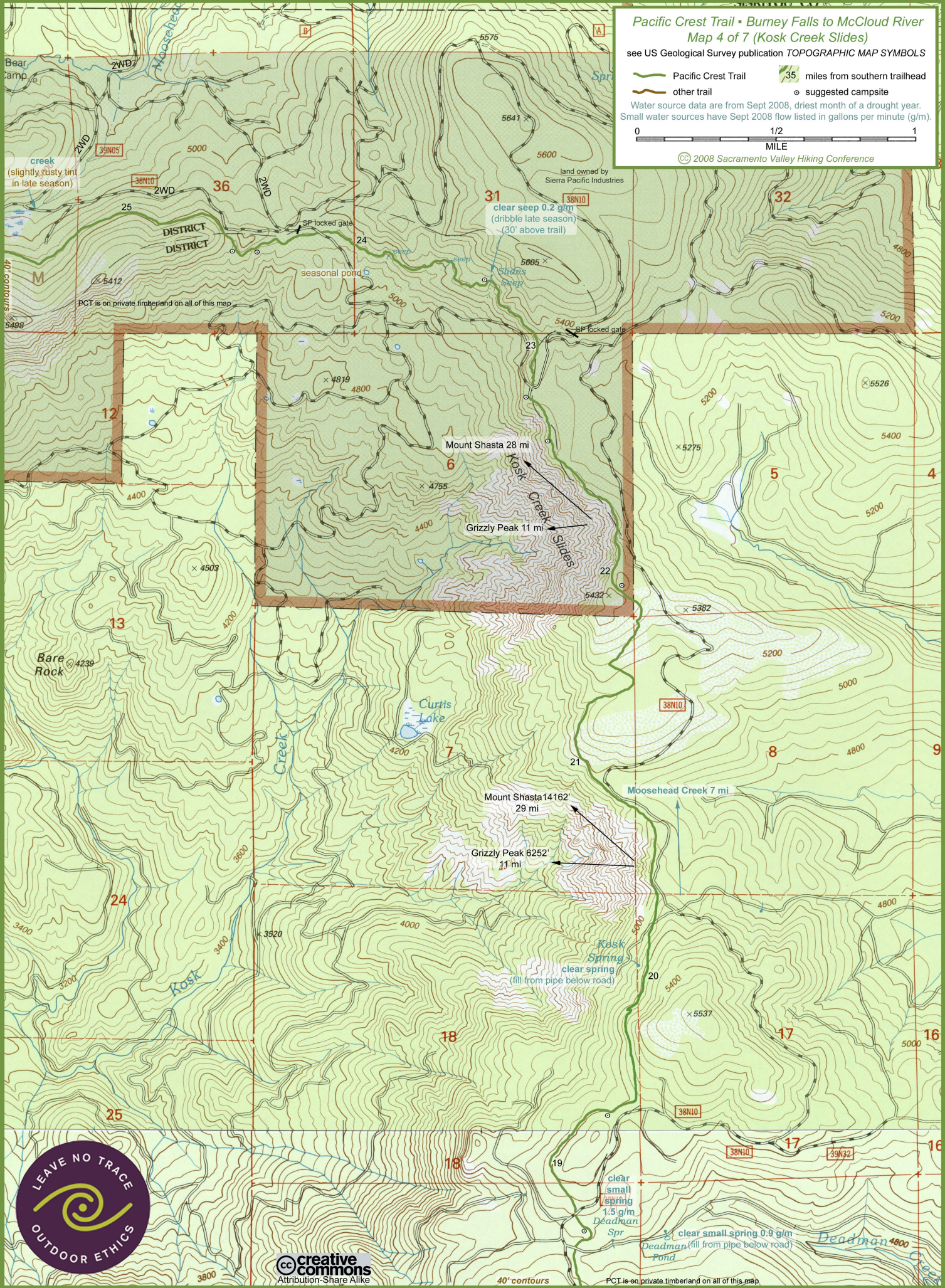
see US Geological Survey publication TOPOGRAPHIC MAP SYMBOLS

- Pacific Crest Trail
- other trail
- 35 miles from southern trailhead
- suggested campsite

Water source data are from Sept 2008, driest month of a drought year.  
Small water sources have Sept 2008 flow listed in gallons per minute (g/m).



© 2008 Sacramento Valley Hiking Conference



PCT is on private timberland on all of this map

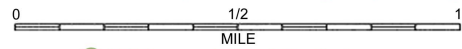


Pacific Crest Trail • Burney Falls to McCloud River  
Map 3 of 7 (Red Mountain)

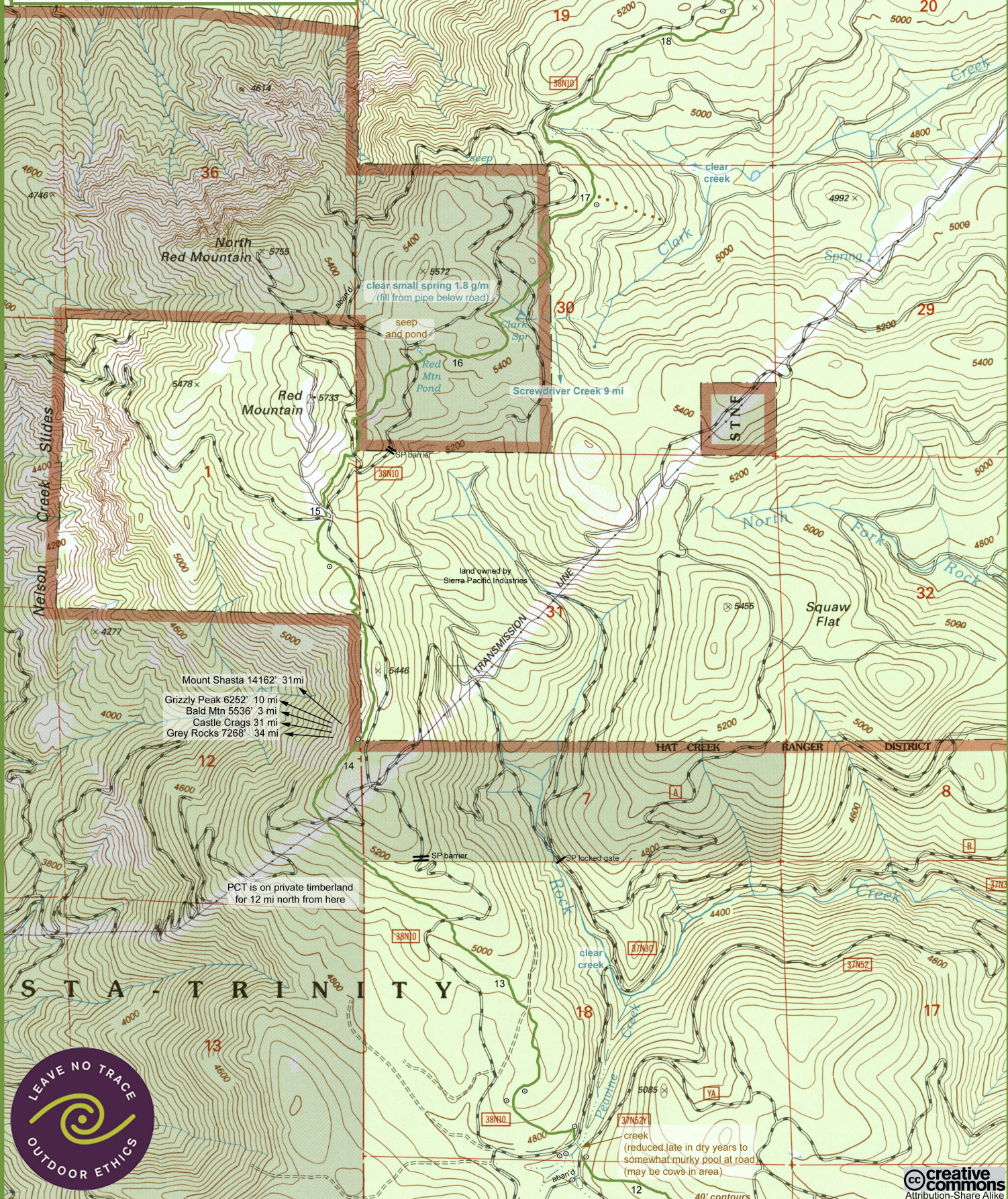
see US Geological Survey publication TOPOGRAPHIC MAP SYMBOLS

- Pacific Crest Trail
- other trail
- 35 miles from southern trailhead
- suggested campsite

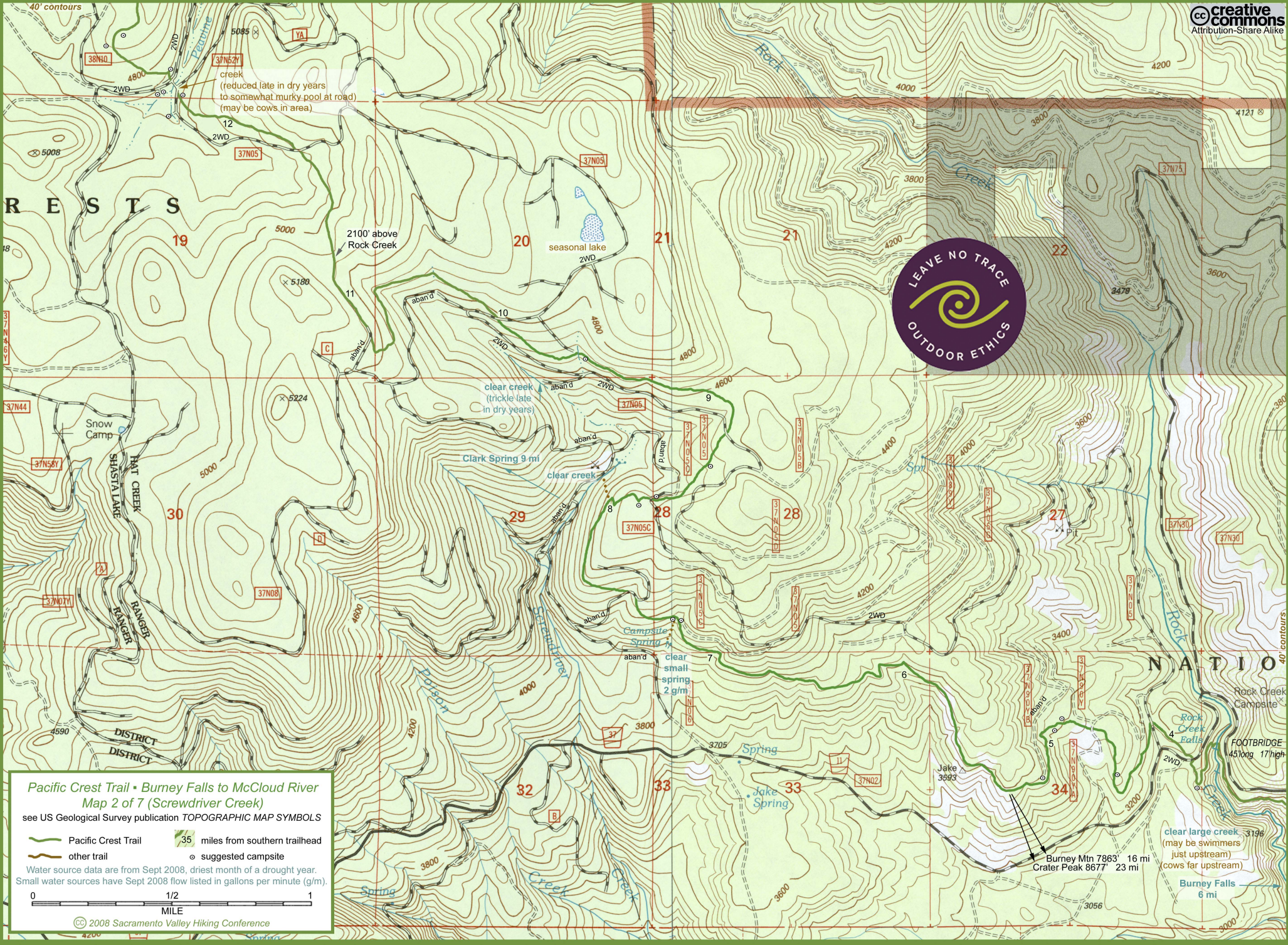
Water source data are from Sept 2008, driest month of a drought year.  
Small water sources have Sept 2008 flow listed in gallons per minute (g/m).



© 2008 Sacramento Valley Hiking Conference







Pacific Crest Trail • Burney Falls to McCloud River  
Map 2 of 7 (Screwdriver Creek)

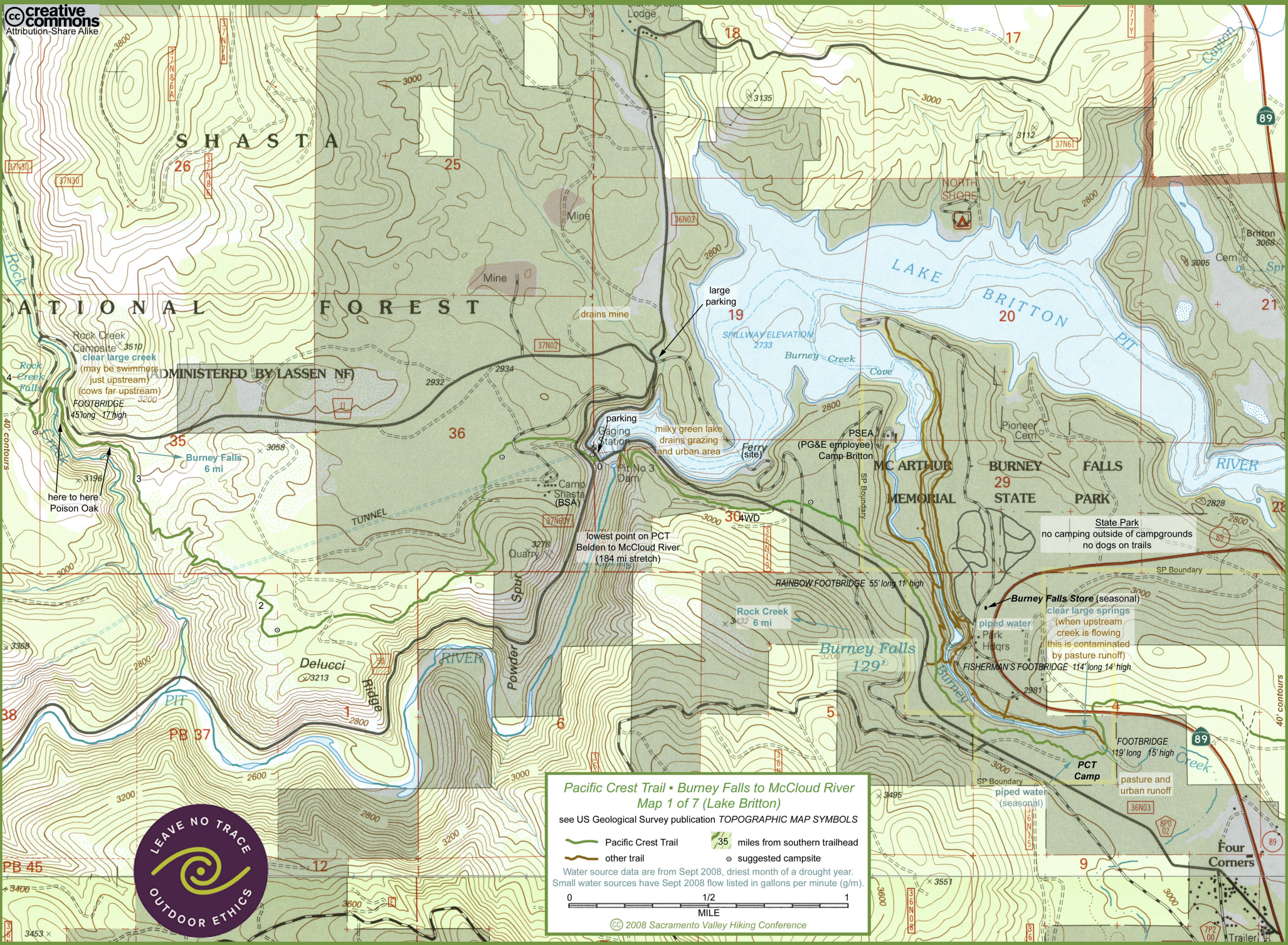
see US Geological Survey publication TOPOGRAPHIC MAP SYMBOLS

- Pacific Crest Trail
- other trail
- 35 miles from southern trailhead
- suggested campsite

Water source data are from Sept 2008, driest month of a drought year. Small water sources have Sept 2008 flow listed in gallons per minute (g/m).

0 1/2 1  
MILE





Pacific Crest Trail • Burney Falls to McCloud River  
Map 1 of 7 (Lake Britton)

see US Geological Survey publication TOPOGRAPHIC MAP SYMBOLS

- Pacific Crest Trail
- other trail
- 35 miles from southern trailhead
- suggested campsite

Water source data are from Sept 2008, driest month of a drought year. Small water sources have Sept 2008 flow listed in gallons per minute (g/m).





36 mi to McCloud

Cayton  
Valley

Note:

Lake Britton is the last paved access before the trail heads north over the mountains to McCloud River. It is suggested to hike Lake Britton ↔ Subway Cave (the last paved access before heading south over Lassen Park) in spring or autumn while the high country is under snow

State Park has hot showers, snack bar, small store. No gas station. No dogs allowed on trails. There is a fee to park vehicle.

37  
National Route  
to Canada

Lake Britton

McArthur-Burney  
Falls State Park  
entrance station

89

daytime parking  
(no overnight)

Recommended Trailhead



small parking area and trail  
just north of dam  
(PCT is the road  
across the dam)

- paved highway
- paved secondary road
- gravel road
- dirt road
- Pacific Crest Trail

52 mi  
miles between dots

Pacific Crest Trail  
Burney Falls trailhead

creative commons  
Attribution-Share Alike

89

to Subway Cave

to Burney

Cassel Road

Baum Lake  
PG&E  
fishing access  
parking

Crystal Lake  
Hatchery

Baum Lake Rd  
PG&E power plant  
public access parking

Cassel

Cassel Road

to Alturas

to Mexico

minor revision 2010

© 2008 Sacramento Valley Hiking Conference