

36 mi to McCloud

Cayton
Valley

Note:

Lake Britton is the last paved access before the trail heads north over the mountains to McCloud River. It is suggested to hike Lake Britton ↔ Subway Cave (the last paved access before heading south over Lassen Park) in spring or autumn while the high country is under snow

State Park has hot showers, snack bar, small store. No gas station. No dogs allowed on trails. There is a fee to park vehicle.

37
National Route
to Canada

Lake Britton

McArthur-Burney
Falls State Park
entrance station

89

daytime parking
(no overnight)

Recommended Trailhead



small parking area and trail
just north of dam
(PCT is the road
across the dam)

- paved highway
- paved secondary road
- gravel road
- dirt road
- Pacific Crest Trail

52 mi
miles between dots

Pacific Crest Trail
Burney Falls trailhead

creative
commons
Attribution-Share Alike

89

to Subway Cave

to Burney

299

299

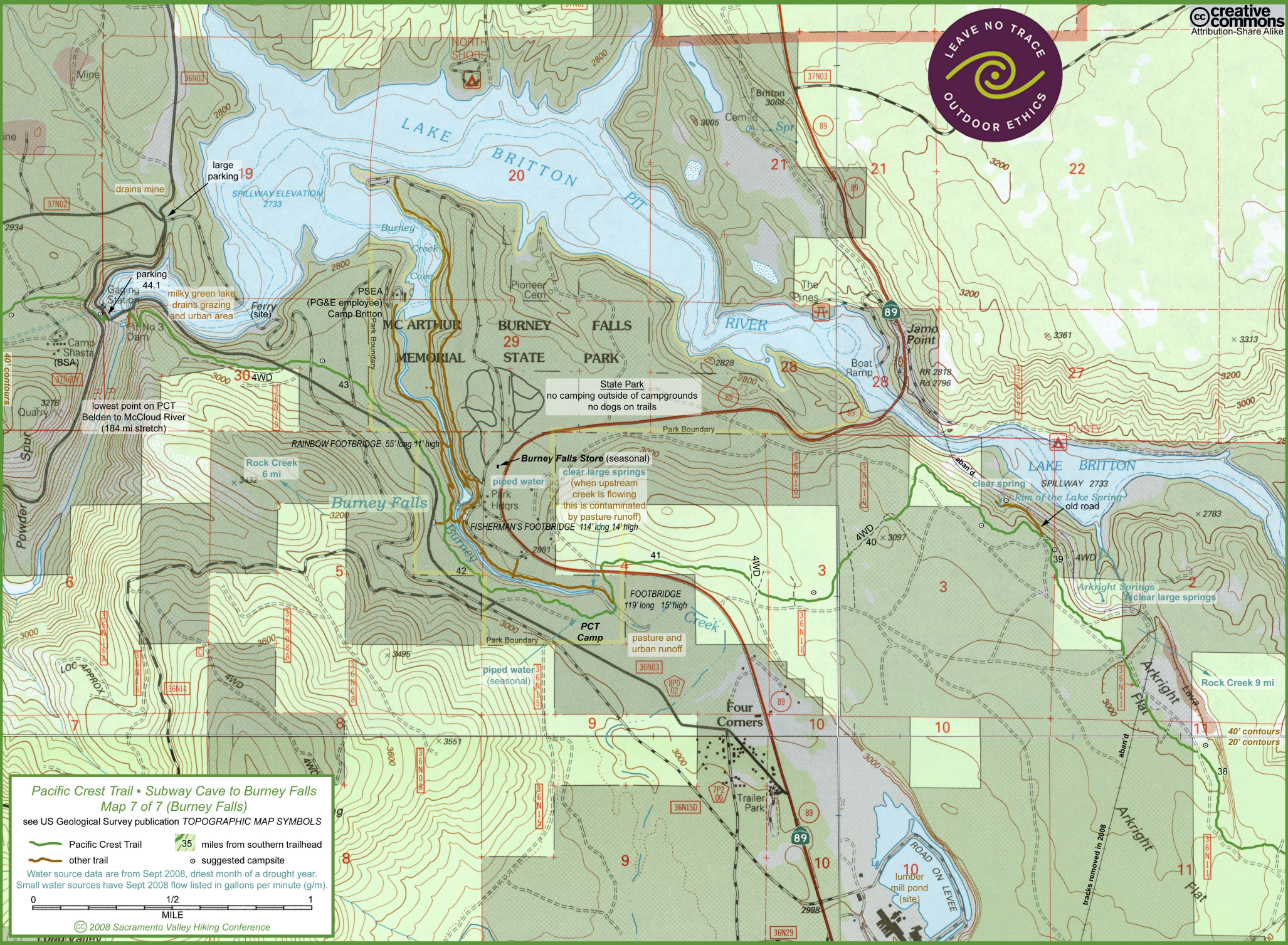
299

to Alturas

to Mexico

minor revision 2010

© 2008 Sacramento Valley Hiking Conference

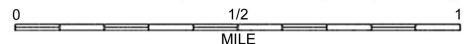


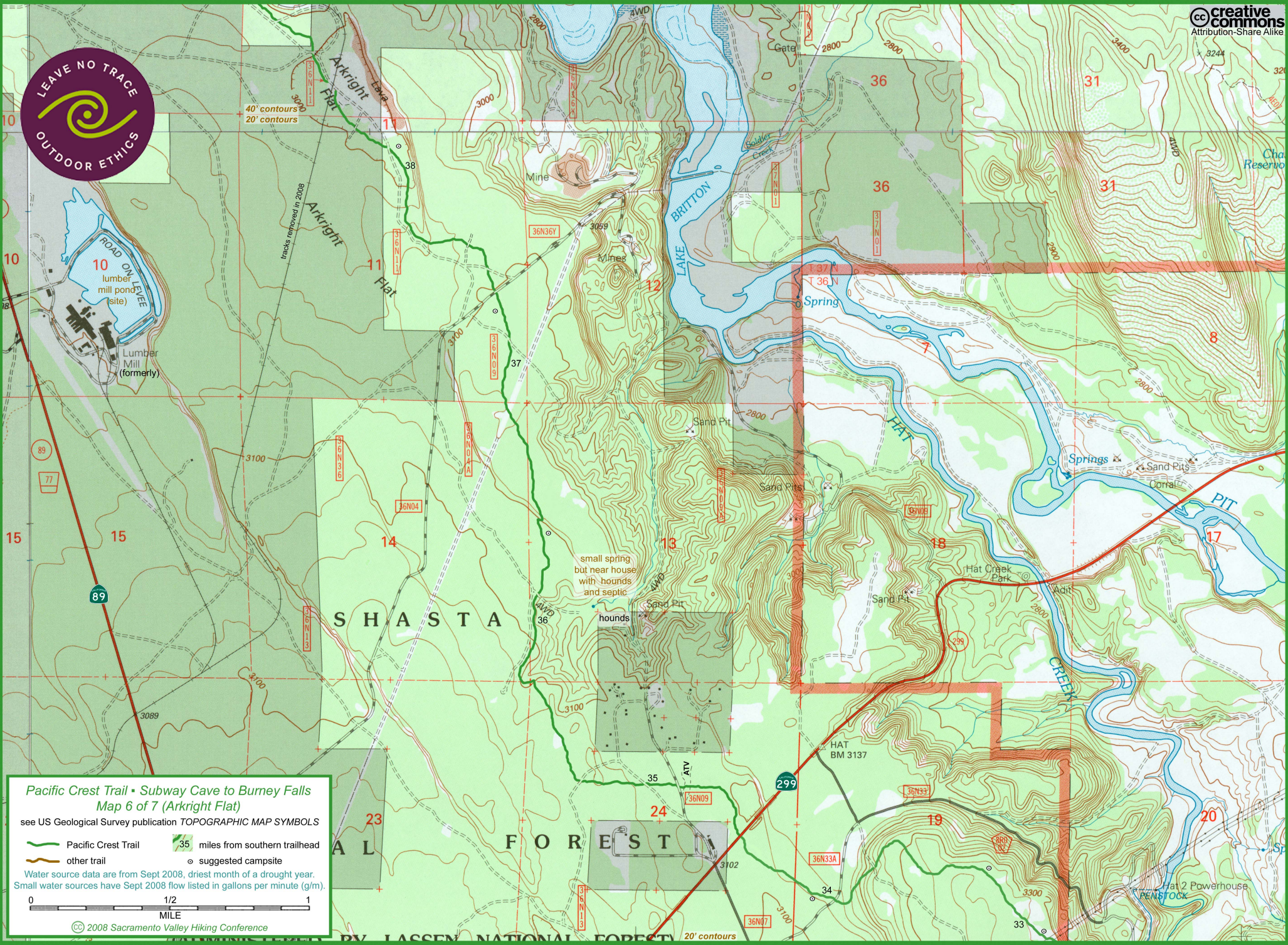
Pacific Crest Trail • Subway Cave to Burney Falls Map 7 of 7 (Burney Falls)

see US Geological Survey publication TOPOGRAPHIC MAP SYMBOLS

- Pacific Crest Trail
- other trail
- 35 miles from southern trailhead
- suggested campsite

Water source data are from Sept 2008, driest month of a drought year. Small water sources have Sept 2008 flow listed in gallons per minute (gpm).





Pacific Crest Trail • Subway Cave to Burney Falls
Map 6 of 7 (Arkrigh Flat)
see US Geological Survey publication **TOPOGRAPHIC MAP SYMBOLS**

Pacific Crest Trail	35 miles from southern trailhead
other trail	suggested campsite

Water source data are from Sept 2008, driest month of a drought year.
Small water sources have Sept 2008 flow listed in gallons per minute (g/m).

0 1/2 1
MILE

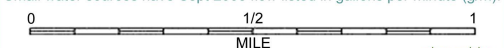
© 2008 Sacramento Valley Hiking Conference

Pacific Crest Trail • Subway Cave to Burney Falls
Map 5 of 7 (Rock Creek Springs)

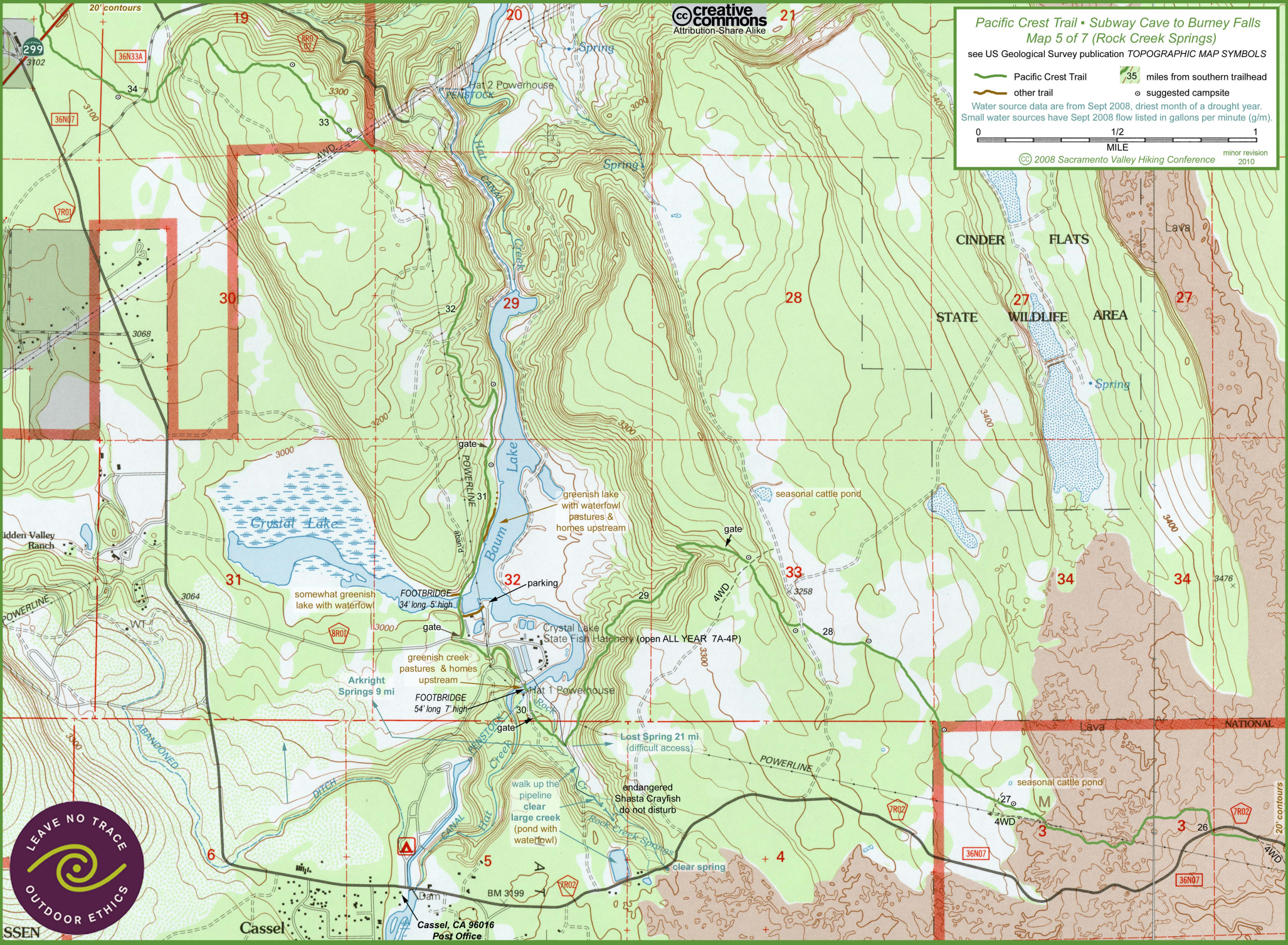
see US Geological Survey publication TOPOGRAPHIC MAP SYMBOLS

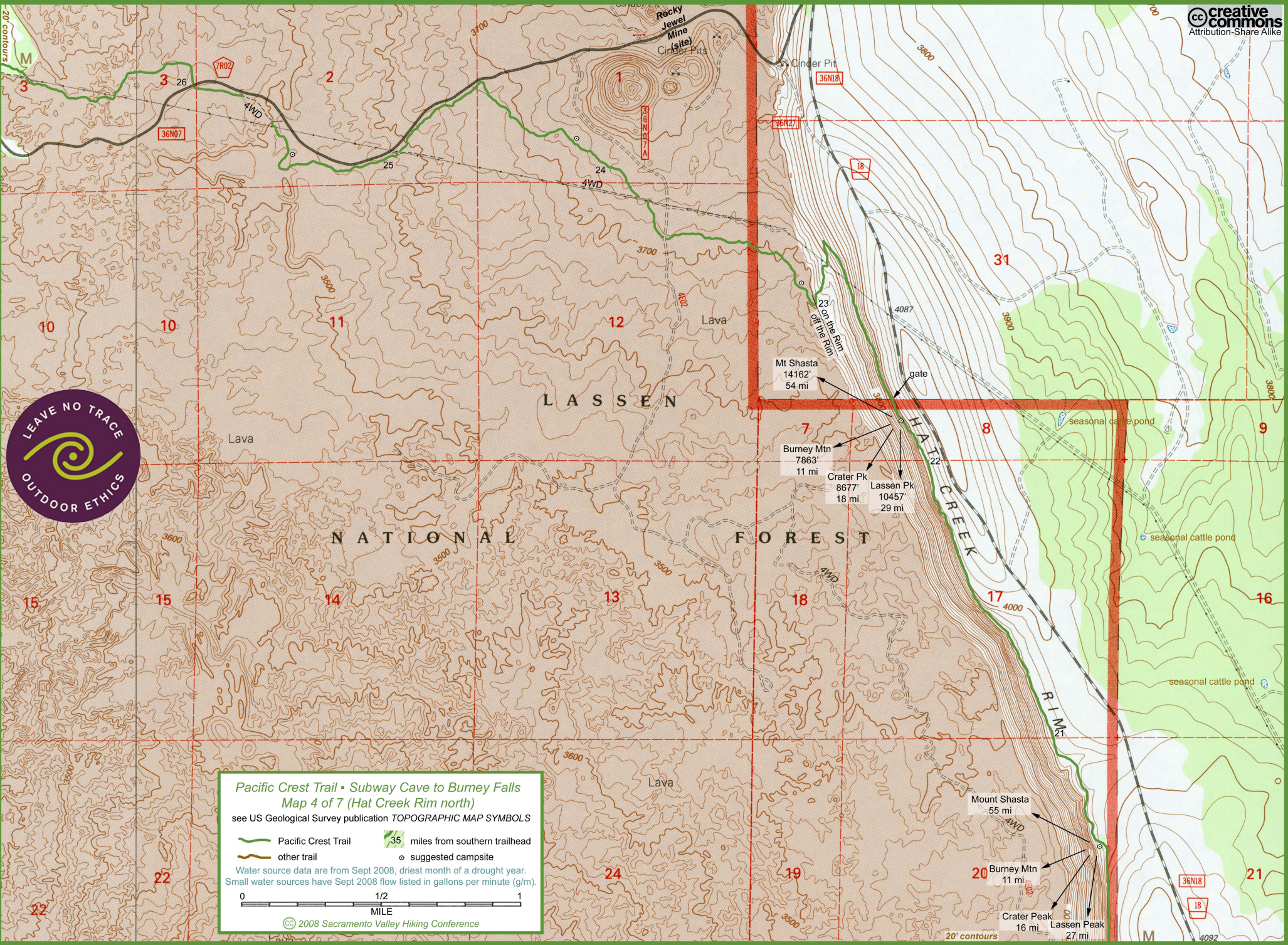
- Pacific Crest Trail
- other trail
- 35 miles from southern trailhead
- suggested campsite

Water source data are from Sept 2008, driest month of a drought year. Small water sources have Sept 2008 flow listed in gallons per minute (g/m).



© 2008 Sacramento Valley Hiking Conference minor revision 2010





Pacific Crest Trail • Subway Cave to Burney Falls
Map 4 of 7 (Hat Creek Rim north)

see US Geological Survey publication **TOPOGRAPHIC MAP SYMBOLS**

- Pacific Crest Trail
 - other trail
 - 35 miles from southern trailhead
 - suggested campsite
- Water source data are from Sept 2008, driest month of a drought year.
Small water sources have Sept 2008 flow listed in gallons per minute (g/m).

0 1/2 1
MILE



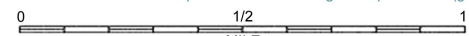
Pacific Crest Trail • Subway Cave to Burney Falls

Map 3 of 7 (Main Launch)

see US Geological Survey publication **TOPOGRAPHIC MAP SYMBOLS**

- Pacific Crest Trail
- other trail
- 35 miles from southern trailhead
- suggested campsite

Water source data are from Sept 2008, driest month of a drought year. Small water sources have Sept 2008 flow listed in gallons per minute (g/m).



© 2008 Sacramento Valley Hiking Conference



drought year 8/24/08 (had small fish)

seasonal cattle pond
Moon Springs Reservoir

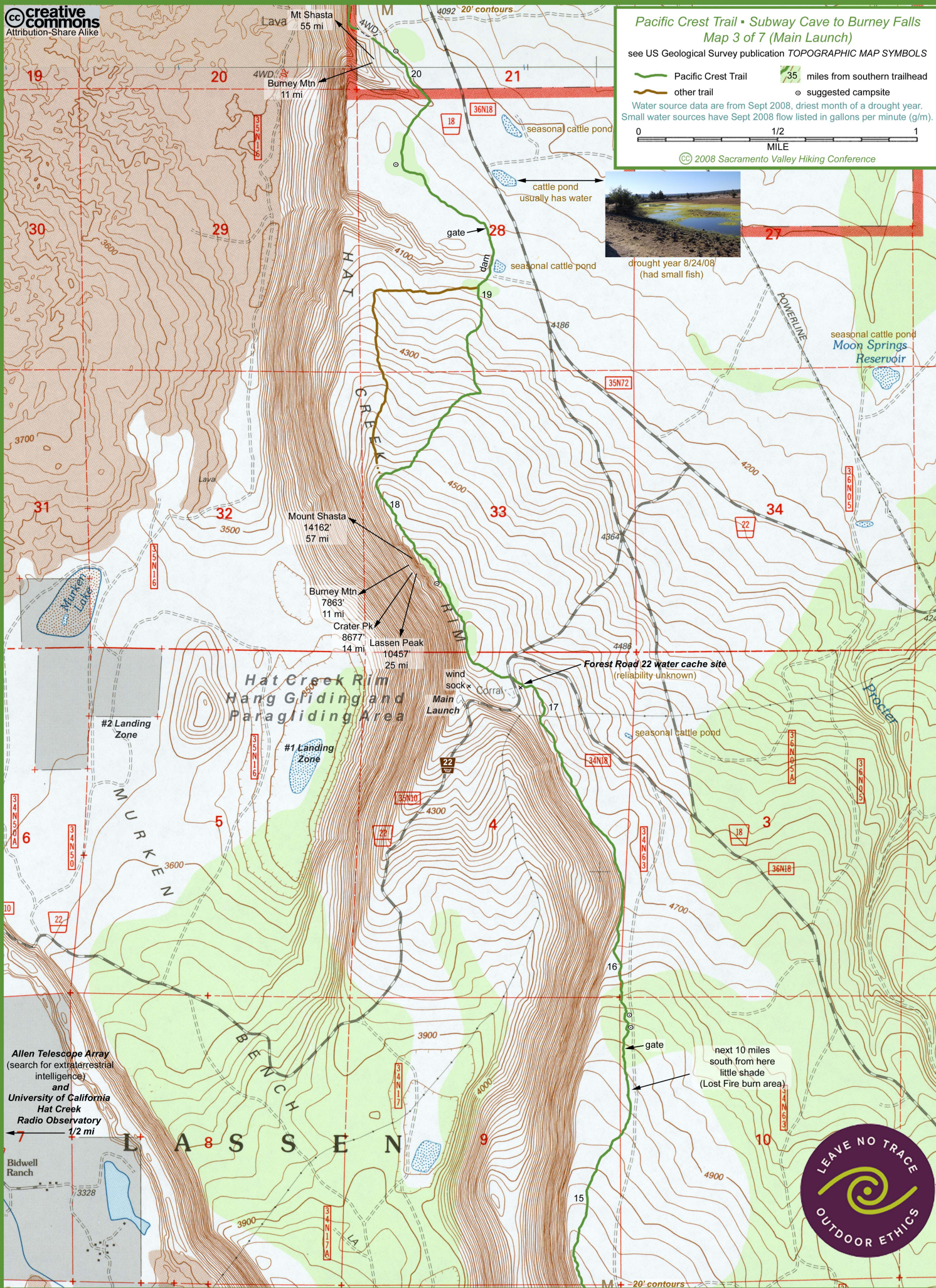
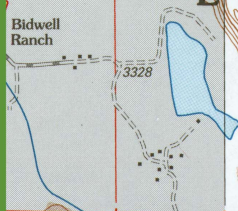
Hat Creek Rim Hang Gliding and Paragliding Area

Forest Road 22 water cache site
(reliability unknown)

next 10 miles south from here little shade (Lost Fire burn area)



Allen Telescope Array
(search for extraterrestrial intelligence)
and
University of California Hat Creek Radio Observatory
1/2 mi



Buttonhook
Landing Zone

Hat Creek Rim
Hang Gliding and
Paragliding Area

South
Launch 5122 Hat Creek Rim Lookout site
(now a communications facility)

Pacific Crest Trail • Subway Cave to Burney Falls Map 2 of 7 (Lost Spring)

see US Geological Survey publication TOPOGRAPHIC MAP SYMBOLS

Pacific Crest Trail 35 miles from southern trailhead
other trail suggested campsite

Water source data are from Sept 2008, driest month of a drought year.
Small water sources have Sept 2008 flow listed in gallons per minute (g/m).

0 1/2 1
MILE

© 2008 Sacramento Valley Hiking Conference

F O R E S T

H A T
C R E E K
R I M

C R E E K

R I M

C r e e k

M

shade spot

highest point on PCT
along Hat Creek Rim

a few pines

nested in clump of short oaks

1 pine tree

2 pine trees

Mount Shasta 14162' 61 mi

27 Burney Mtn 7863' 12 mi

Crater Pk 8683' 13 mi

Lassen Pk 10457' 18 mi

cluster of pines

Rock Creek 21 mi

Mount Shasta 14162' 62 mi

Burney Mtn 7863' 12 mi

Crater Pk 8683' 12 mi

Lassen Pk 10457' 19 mi

Lava

gate

gate

gate

gate

gate

gate

gate

gate

gate

gate

gate

gate

clear large spring
(400' down. Steep,
brushy slope)

Least brush down ridge,
then cut over to spring
Avoid rock drop offs.
Difficult

Subway Cave 9 mi

20' contours
40' contours

seasonal marsh
& cattle pond

seasonal cattle pond

seasonal cattle pond

seasonal cattle pond

seasonal cattle pond

seasonal cattle pond

seasonal cattle pond

seasonal cattle pond

seasonal cattle pond

seasonal cattle pond

seasonal cattle pond

seasonal cattle pond

seasonal cattle pond

seasonal cattle pond

Government Lake
seasonal cattle pond



Government Well
3.5' of water (6' down)
drought year 8/24/08
(cows likely)

Porcupine Reservoir
seasonal cattle pond



creative commons
Attribution-Share Alike

Pacific Crest Trail • Subway Cave to Burney Falls
Map 1 of 7 (Hat Creek Rim Scenic Viewpoint)

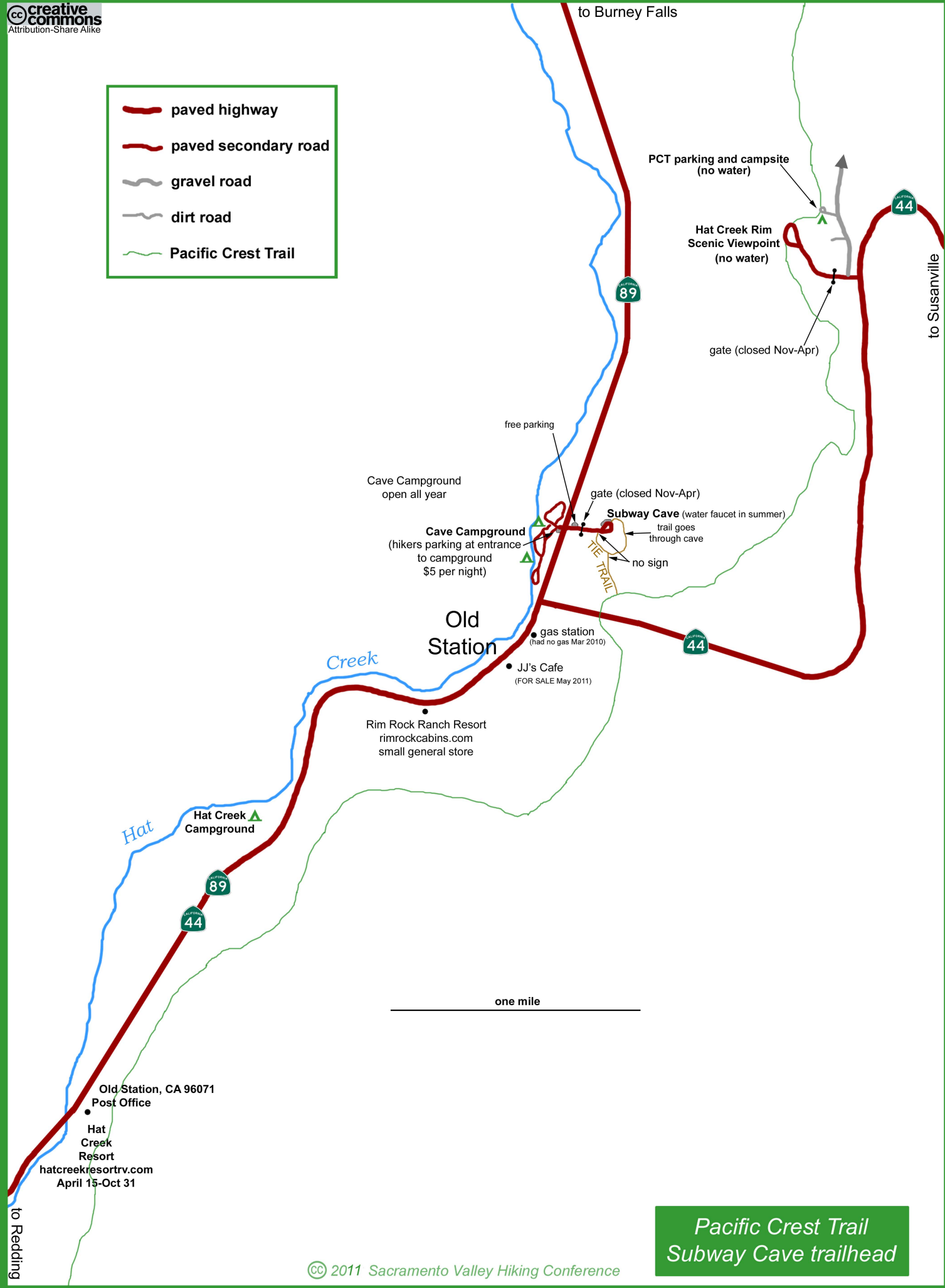
see US Geological Survey publication TOPOGRAPHIC MAP SYMBOLS

- Pacific Crest Trail
- other trail
- 35 miles from southern trailhead
- suggested campsite

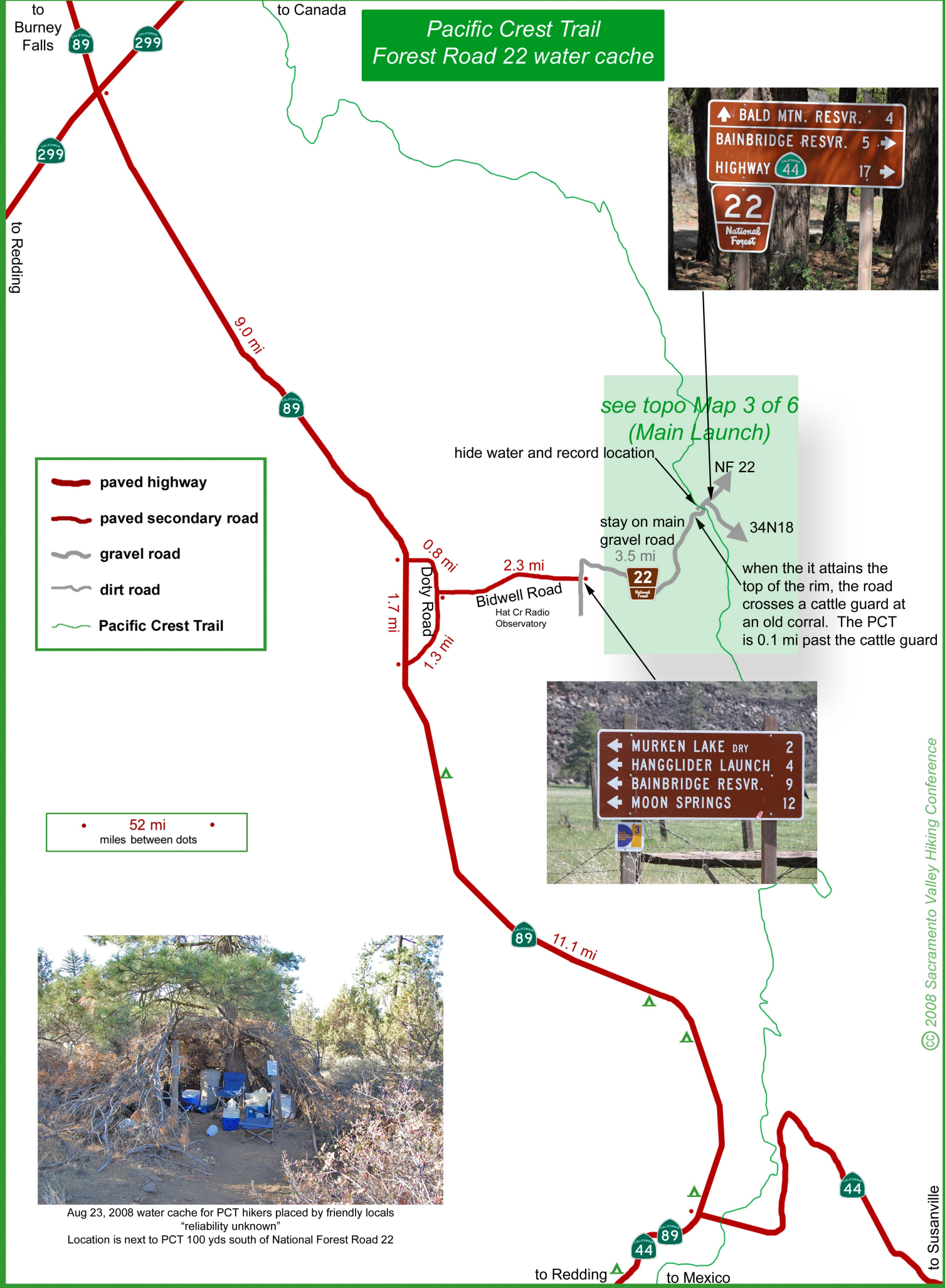
Water source data are from Sept 2008, driest month of a drought year.
Small water sources have Sept 2008 flow listed in gallons per minute (gpm).



- paved highway
- paved secondary road
- gravel road
- dirt road
- Pacific Crest Trail



Pacific Crest Trail
Subway Cave trailhead



Pacific Crest Trail
Forest Road 22 water cache



see topo Map 3 of 6
(Main Launch)

hide water and record location

stay on main
gravel road

when the it attains the
top of the rim, the road
crosses a cattle guard at
an old corral. The PCT
is 0.1 mi past the cattle guard



Aug 23, 2008 water cache for PCT hikers placed by friendly locals
"reliability unknown"
Location is next to PCT 100 yds south of National Forest Road 22