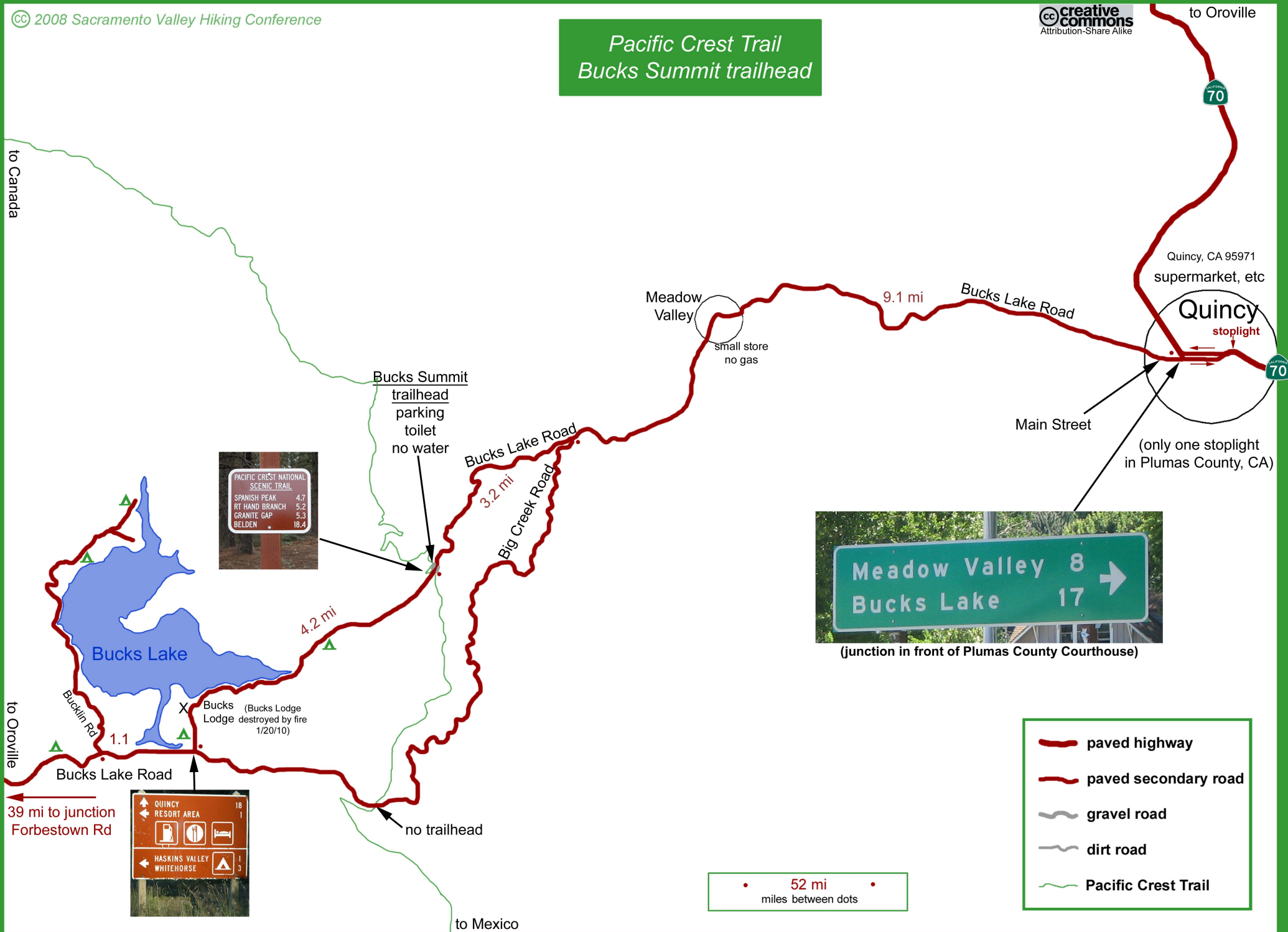
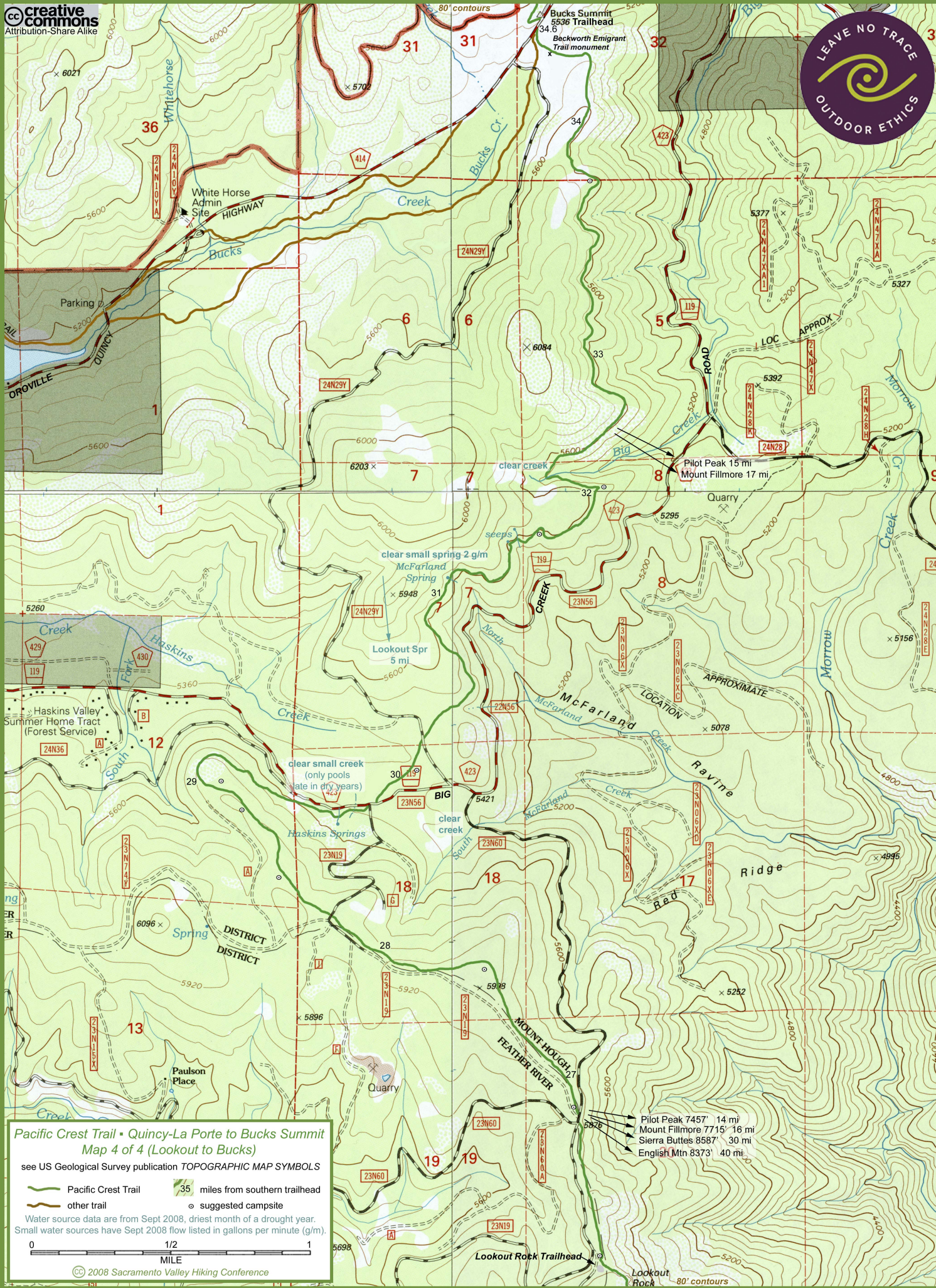


Pacific Crest Trail Bucks Summit trailhead





Pacific Crest Trail • Quincy-La Porte to Bucks Summit
Map 4 of 4 (Lookout to Bucks)

see US Geological Survey publication **TOPOGRAPHIC MAP SYMBOLS**

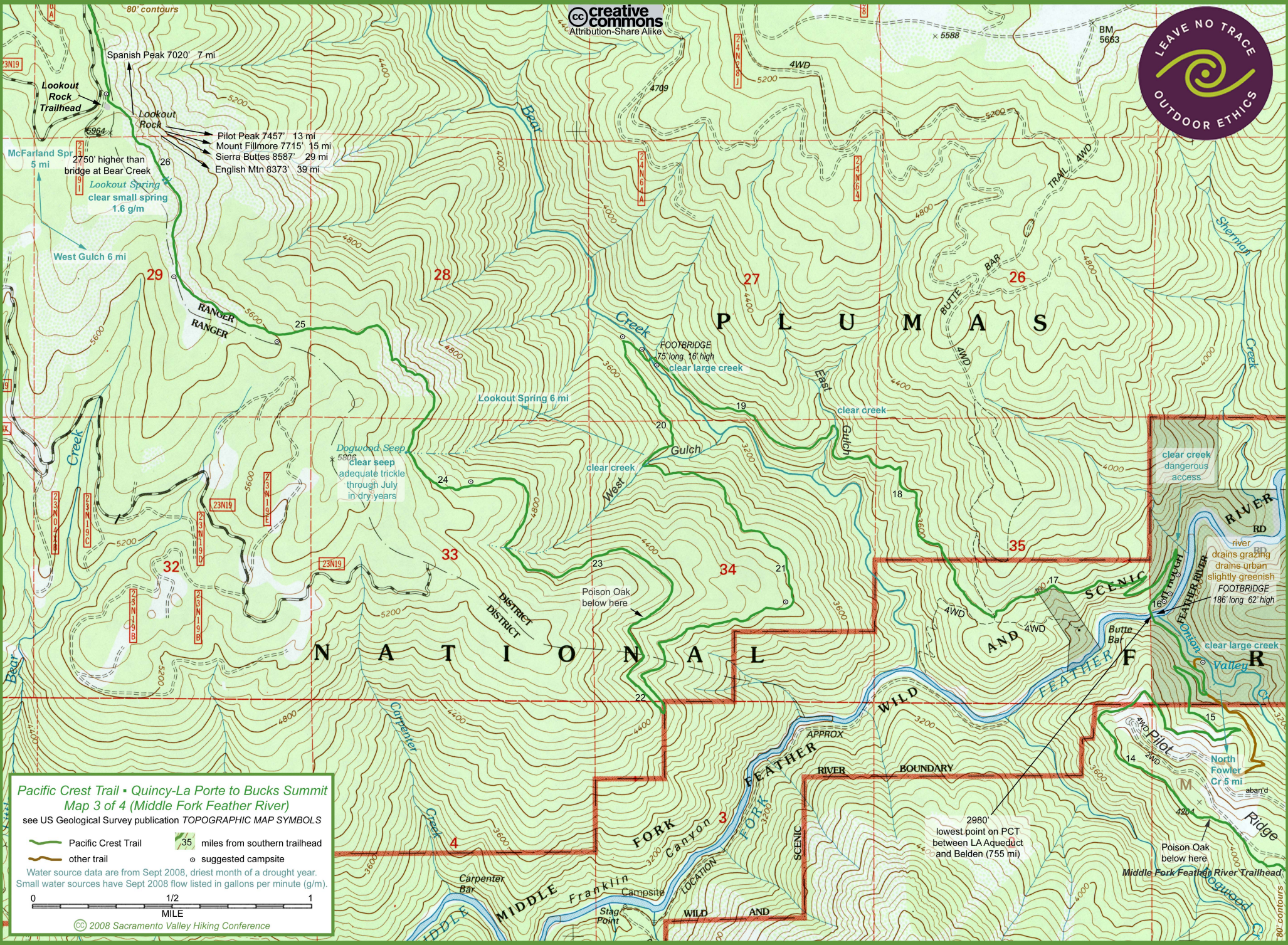
Pacific Crest Trail other trail 35 miles from southern trailhead
 suggested campsite

Water source data are from Sept 2008, driest month of a drought year.
Small water sources have Sept 2008 flow listed in gallons per minute (g/m).

0 1/2 1
MILE

© 2008 Sacramento Valley Hiking Conference

Pilot Peak 7457' 14 mi
Mount Fillmore 7715' 16 mi
Sierra Buttes 8587' 30 mi
English Mtn 8373' 40 mi



Pacific Crest Trail • Quincy-La Porte to Bucks Summit
Map 3 of 4 (Middle Fork Feather River)
see US Geological Survey publication TOPOGRAPHIC MAP SYMBOLS

Pacific Crest Trail	35 miles from southern trailhead
other trail	suggested campsite

Water source data are from Sept 2008, driest month of a drought year.
Small water sources have Sept 2008 flow listed in gallons per minute (g/m).

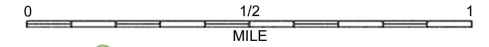
0 1/2 1
MILE

© 2008 Sacramento Valley Hiking Conference

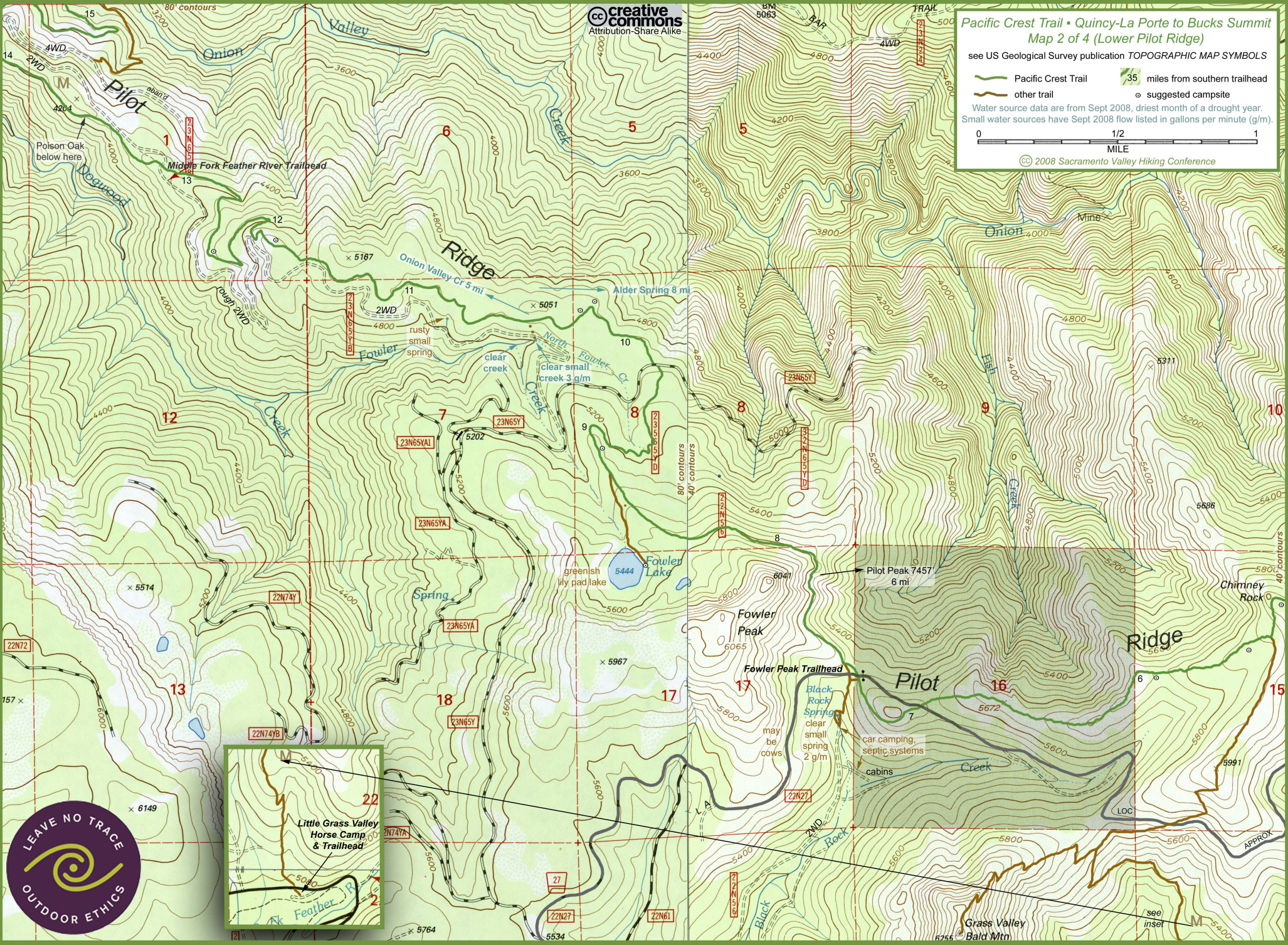
see US Geological Survey publication TOPOGRAPHIC MAP SYMBOLS

- Pacific Crest Trail
- other trail
- 35 miles from southern trailhead
- suggested campsite

Water source data are from Sept 2008, driest month of a drought year.
Small water sources have Sept 2008 flow listed in gallons per minute (g/m).



© 2008 Sacramento Valley Hiking Conference



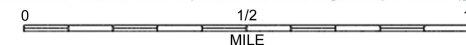


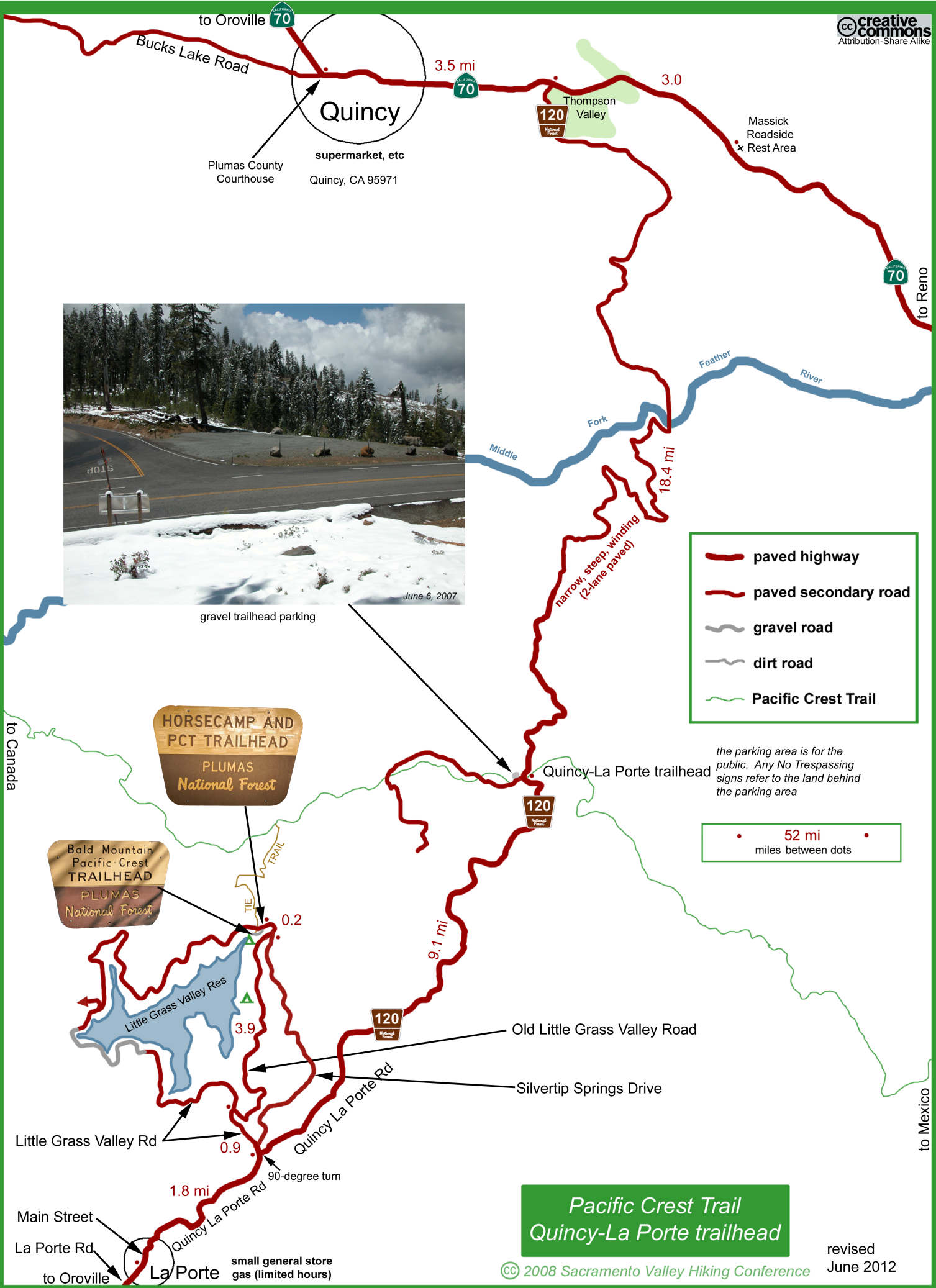
Pacific Crest Trail • Quincy-La Porte to Bucks Summit
Map 1 of 4 (Upper Pilot Ridge)

see US Geological Survey publication TOPOGRAPHIC MAP SYMBOLS

- Pacific Crest Trail
- other trail
- 35 miles from southern trailhead
- suggested campsite

Water source data are from Sept 2008, driest month of a drought year.
Small water sources have Sept 2008 flow listed in gallons per minute (g/m).





Pacific Crest Trail Quincy-La Porte trailhead